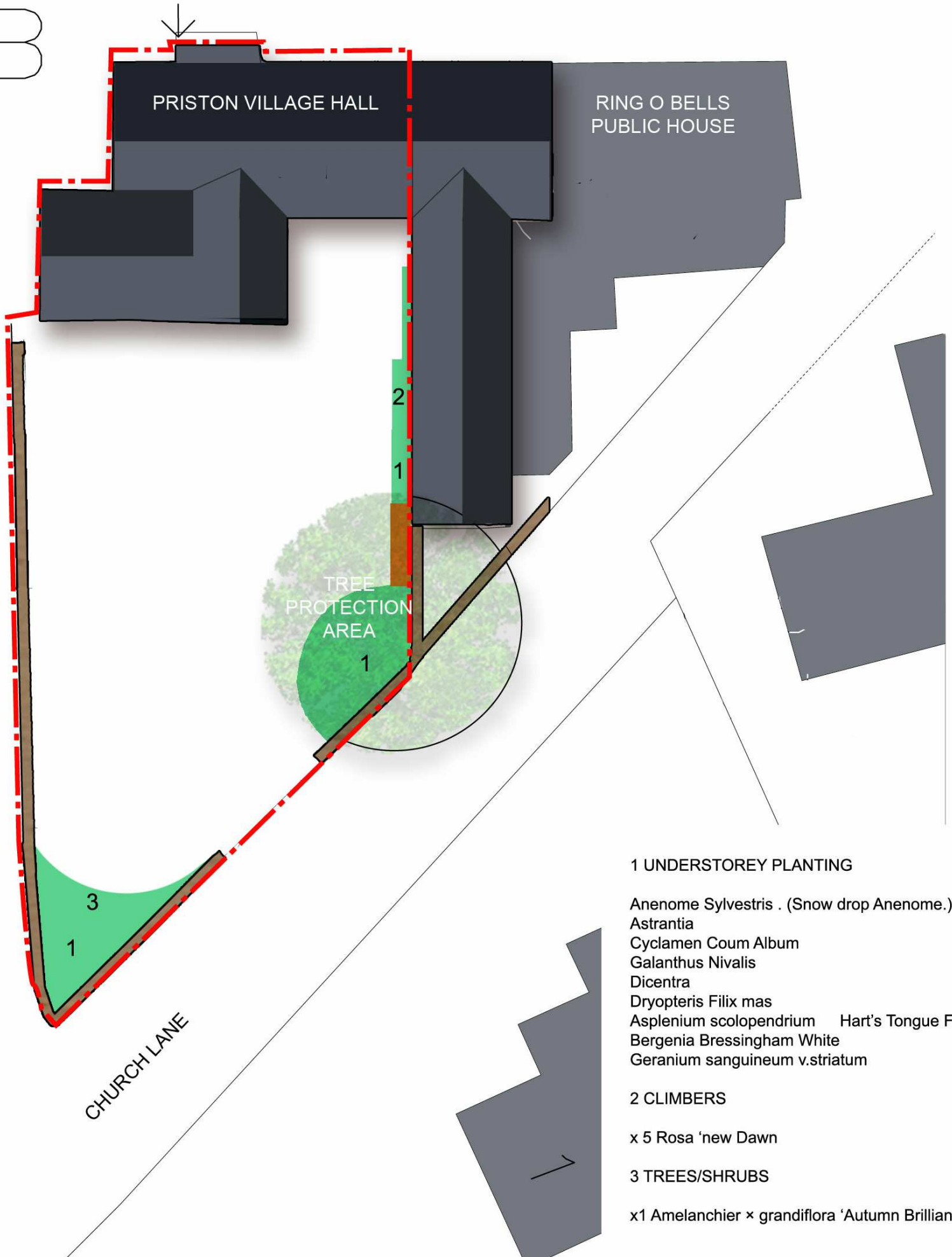


B



1 UNDERSTOREY PLANTING

- Anemone Sylvestris . (Snow drop Anemome.)
- Astrantia
- Cyclamen Coum Album
- Galanthus Nivalis
- Dicentra
- Dryopteris Filix mas
- Asplenium scolopendrium Hart's Tongue Fern
- Bergenia Bressingham White
- Geranium sanguineum v.striatum

2 CLIMBERS

- x 5 Rosa 'new Dawn

3 TREES/SHRUBS

- x1 Amelanchier x grandiflora 'Autumn Brilliance.